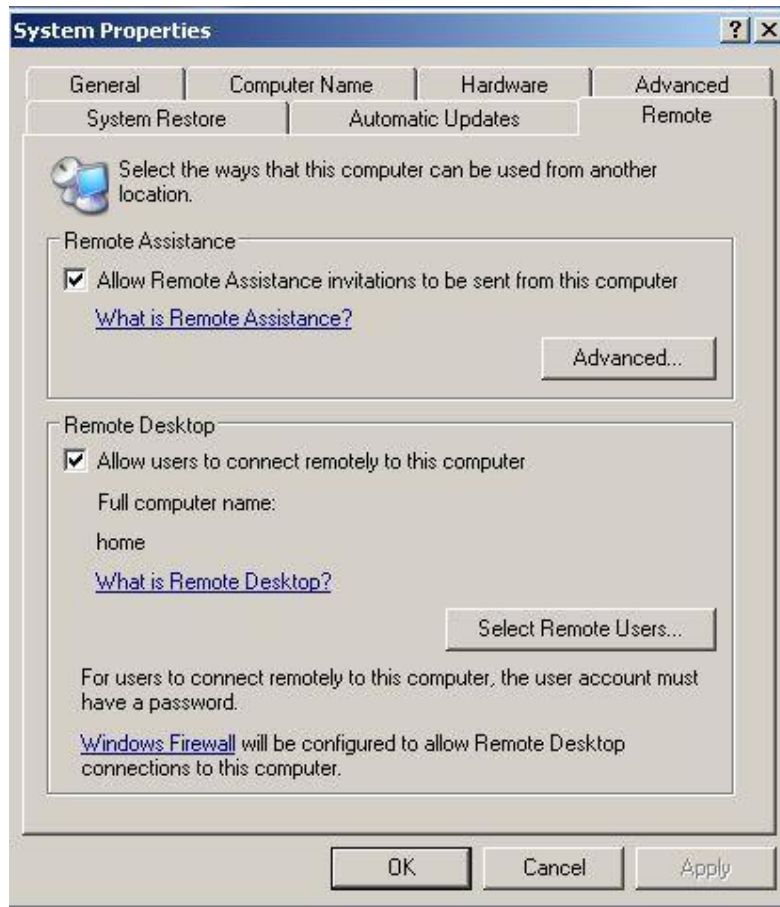
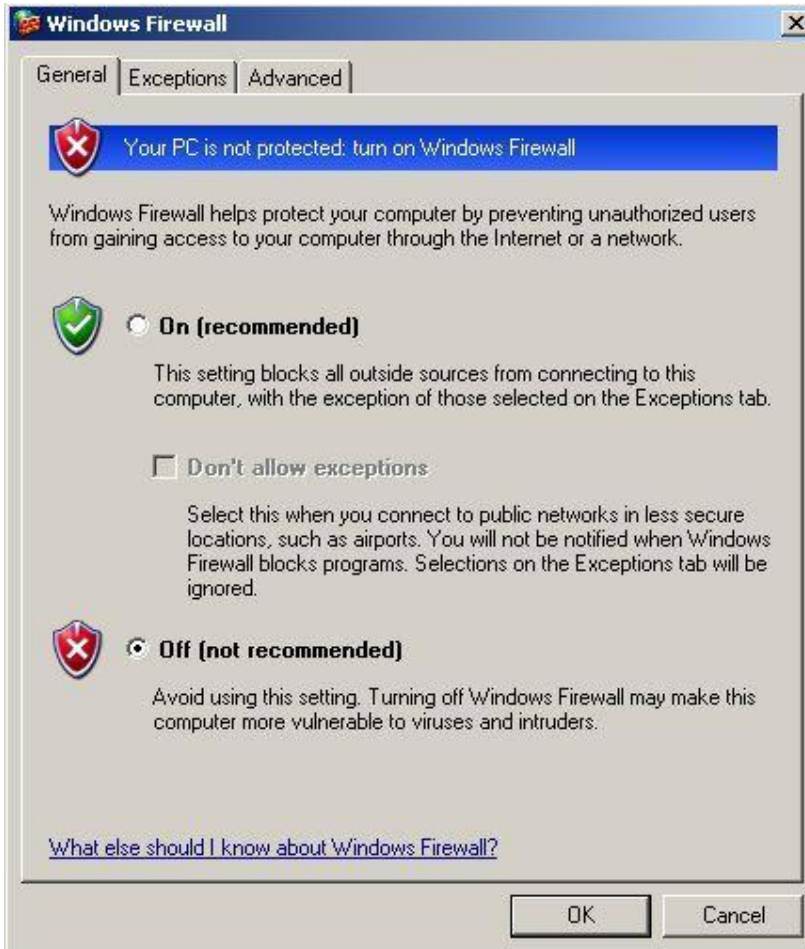


Inainte de instalarea propriu-zisa a programului, va rugam sa efectuati urmatoarele modificari preliminare ale sistemului dvs. de operare:

1. Click dreapta pe *“My Computer”*. Selectati tab-ul *“Remote”* si bifati “Allow remote assistance invitations to be sent from thos computer” si “Allow users to connect remotely to this computer”.



2 “Start” – “Control Panel” – “Windows Firewall” si bifati “OFF”.



3 “Start” – “Control Panel” – “User accounts”.

In cazul in care nu aveti parola la sistemul dvs. de operare, va rugam sa va puneti una. Alegeti din meniul respectiv contul de “Computer Administrator” si, dand click pe el, selectati optiunea “Change my password”. Daca nu aveti parola, lasati liber primul rand. In al doilea camp veti trece parola dorita de dvs., o repetati in campul al treilea, iar daca credeti ca veti uita parola sistemului, vi se ofera posibilitatea de a introduce o legatura catre parola dvs. Cand veti da click pe “Change my password” sistemul dvs. de operare va avea o parola noua.



The screenshot shows the Windows User Accounts control panel window. The title bar reads "User Accounts". Below the title bar is a navigation bar with "Back" and "Home" buttons. The main content area is titled "Change your password". On the left, there is a "Learn About" section with three links: "Creating a secure password", "Creating a good password hint", and "Remembering a password". The main form contains the following fields and instructions:

- "Type your current password:" followed by a text input field.
- "Type a new password:" followed by a text input field with three dots indicating a password field.
- "Type the new password again to confirm:" followed by a text input field with three dots indicating a password field.
- A note: "If your password contains capital letters, be sure to type them the same way every time you log on."
- "Type a word or phrase to use as a password hint:" followed by a text input field.
- A note: "The password hint will be visible to everyone who uses this computer."

At the bottom right of the form are two buttons: "Change Password" and "Cancel".

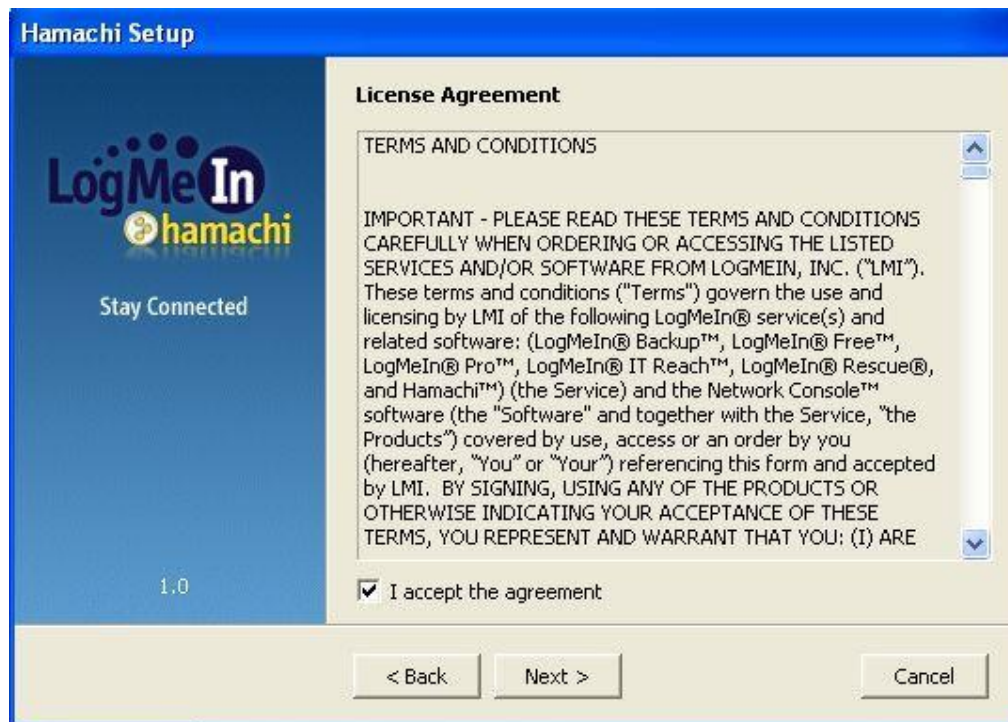
Urmeaza configurarea pas cu pas a programului.

Pentru a putea incepe instalarea, va rugam sa descarcati programul de pe serverul nostru: <http://www.servicecomp.ro/homecheck.htm> . Odata ce ati salvat programul, urmati instructiunile de mai jos!

Dublu click pe fisierul de setup(cel care l-ati descarcat). In fereastra urmatoare, dati Next.



Bifati acum acceptarea licentei.



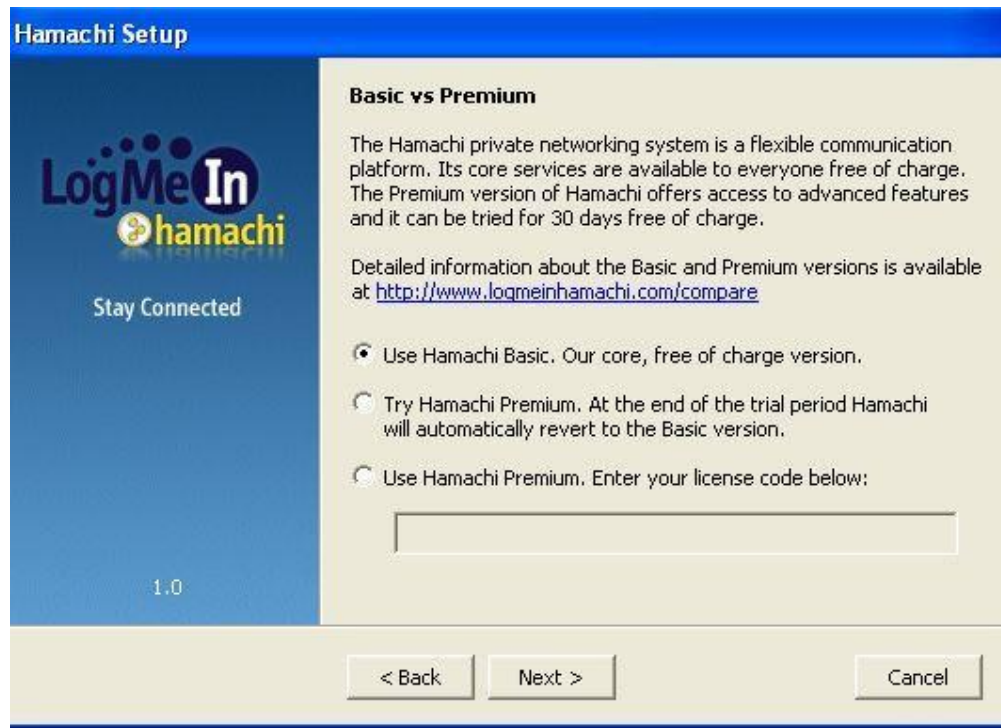
Bifati ca programul sa porneasca automat la pornirea sistemului.



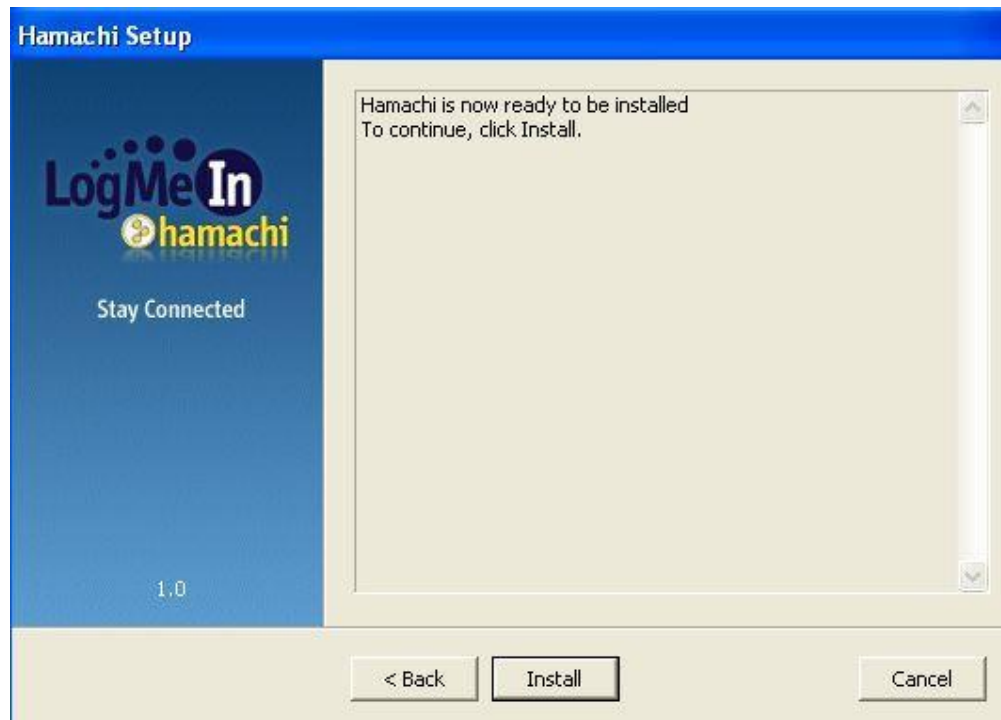
In urmatoarea fereastra va rugam sa dati next, fara sa bifati nimic (recomandat)



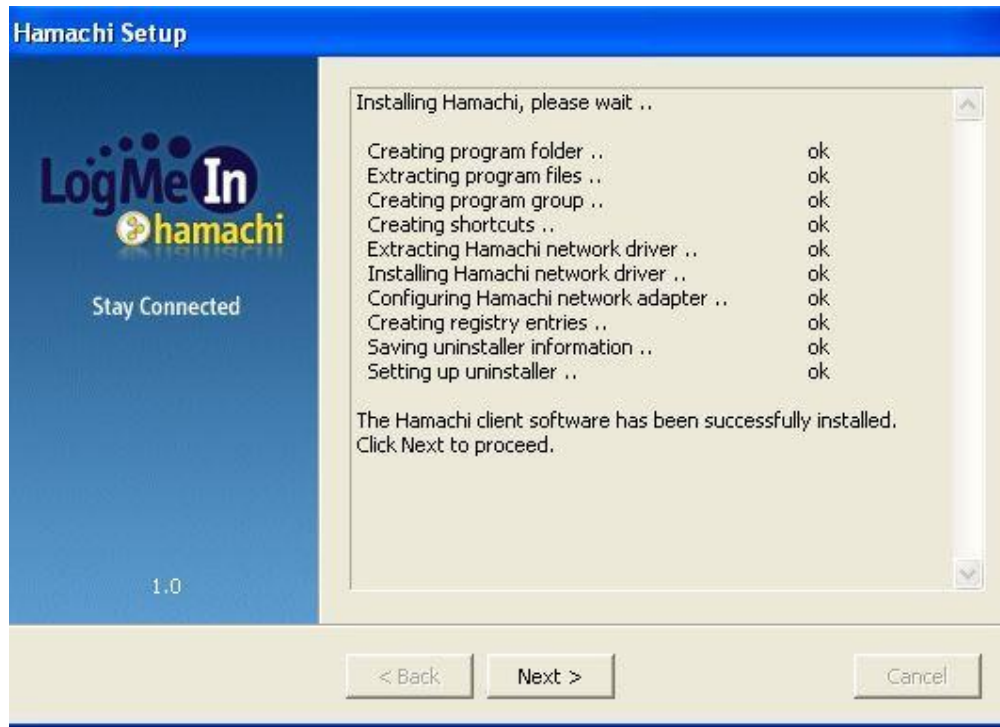
Bifati "Use hamachi basic".



Si acum "install"



Asteptati putin pentru a se configura programul, si apoi dati "next"



Bifati "Launch Hamachi"



Dati click pe butonul de “power on”, aflat in stanga jos.



Introduceti un nume de cont, de preferat numele dvs.



In cateva secunde veti primi si IP-ul, pe baza caruia se va face conectarea prin remote pe calculatorul dumneavoastra. Setarile pentru inscrierea in retea noastra sunt urmatoarele: user: **incearca** | parola: **123456** . Avem rugamintea ca dupa conectarea in retea noastra sa ne contactati pentru a ne pune la current cu datele problemei. Contact: office@servicecomp.ro tel: **0721.61.49.43**